



# Arenac County 2021 Annual Report

## MESSAGE FROM THE DISTRICT DIRECTOR



It is once again my pleasure to provide you with a snapshot of the work that Michigan State University (MSU) Extension is doing in your community. The circumstances of the past two years have presented new and unique challenges for us and many others. However, because of your continued support, MSU Extension has been able to continue its long tradition of providing programming and educational resources that help to enhance the lives of Arenac County residents, contribute to community prosperity and address critical issues as they arise in communities.

In 2021, MSU Extension provided **1,900** points of contact to Arenac County residents through articles, virtual and online programming and in person experiences. We worked with local audiences and community partners to deliver our services in the safest way possible and expanded our reach to new audiences through the use of technology.

Your support of:

- MSU Extension 4-H Youth Development allowed over **150** youth to learn lifelong skills, develop leadership abilities, explore new interests and discover the value of community service.
- MSU Extension food programs allow residents to learn about the safety, security and affordability of local fresh foods, how to use them, where to find them, or how to start a cottage food business of their own.
- MSU Extension nutrition and physical activity programs allowed over **36** county residents to improve the quality of their diets and become more active.

We hope you are as proud of this important partnership as we are. We thank you for another great year and the continued opportunity to serve this great community.

Julia (Julie) Darnton, District Director

# PROGRAM HIGHLIGHTS

## CHILDREN & YOUTH

### YOUTH DEVELOPMENT

Michigan 4-H is the largest youth development organization in Michigan and provides more than 200,000 young people with experiential learning opportunities to explore new interests and discover their passions. In 2021, **150** Arenac County youth participated in **20** 4-H programs delivered both virtually and in-person (as COVID-19 pre-cautions shifted).

4-H:

- develops youth as current and future leaders by providing programs that instill young people with knowledge and skills to become positive agents of change through leadership development, civic engagement and education, global citizenship, and cultural competency programming;
- assists youth in preparing for and finding gainful employment opportunities through entrepreneurship, financial literacy, career exploration, and workforce preparation programs; and
- excites youth about future science, technology, engineering, arts and mathematics (STEAM) careers and build critical STEM skills. These programs seek to increase aspirations and attitudes toward science, interest and engagement in science, and skills in critical thinking, problem solving and decision making.



17 Arenac County youths participated in 4-H Robotics at the Arenac Community Center.



**58 students** from Au Gres-Sims School District and Bay-Arenac ISD learned important life skills for eating smart in the 4-H Teen Cuisine program.

## AGRICULTURE & AGRIBUSINESS

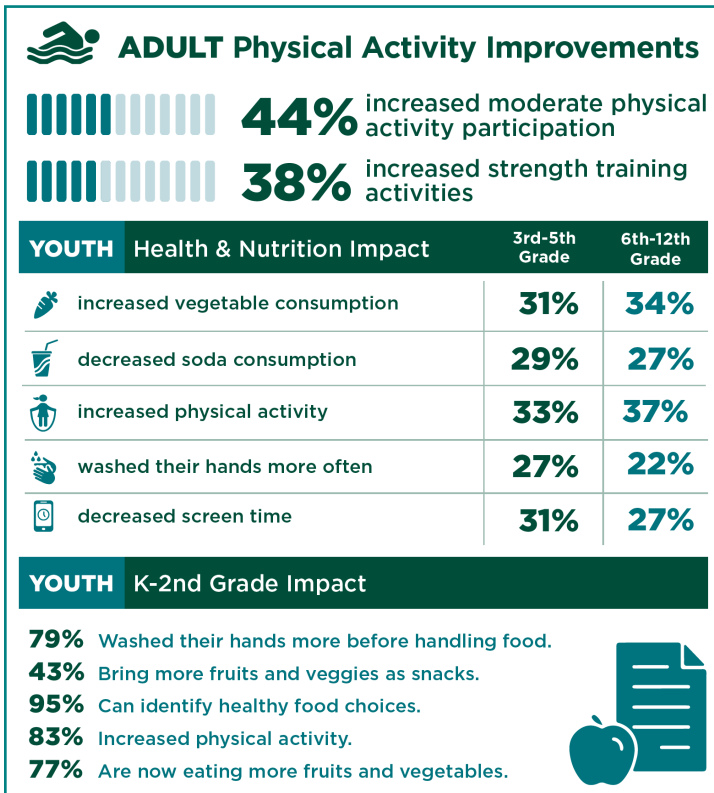
MSU Extension serves the agriculture industry by engaging in research, education and outreach that enhances the quality of life of Michigan residents. In 2021, **31** Arenac County residents participated in programming related to animal agriculture, agribusiness management, beekeeping, consumer and ornamental horticulture, and field crops, fruit crops, and vegetables.

**14** Arenac County residents participated in the Field Crops Virtual Breakfast, a free weekly series for farmers and agribusiness, where they discussed strategies for planting, pest management, plant diseases, weed control, and many other topics.



# PROGRAM HIGHLIGHTS

## HEALTH & NUTRITION



MSU Extension partners with the Michigan Department of Health and Human Services to provide SNAP-Ed, a nutrition education program designed to reduce hunger and food insecurity and promote healthy eating habits for SNAP-Ed eligible populations.

MSU Extension SNAP-Ed community nutrition instructors teach youth, individuals, and families how to make health a priority.

The goal of SNAP-Ed is to improve the likelihood that SNAP-Ed eligible persons will make healthy food choices within a limited budget and choose physically active lifestyles consistent with the current Dietary Guidelines for Americans and the USDA food guidance. In 2021, **38 Arenac County residents** participated in SNAP-Ed programs, such as Eat Smart, Live Strong, My Way to Wellness, and Cooking for One.

## SUPPORTING STRONG COMMUNITIES

As a result of MSU Extension’s social-emotional programming, **36** Arenac residents learned how to manage their anger, reduce stress, thrive as caregivers, practice mindfulness and strengthen their families’ and communities’ understanding of and response to mental health crises. Residents participated in **20** programs including RELAX: Alternatives to Anger, Sleep Education Program for Everyone, Tai Chi for Arthritis and Fall Prevention, and Powerful Tools for Caregivers.

## STEWARDSHIP OF OUR NATURAL RESOURCES

Our natural resources programs improve public understanding, help landowners and communities use those assets for sustainable long-term social and economic development and conserve natural resources for future generations.

As leadership partners of the Northeast Michigan Great Lakes Stewardship Initiative, MSU Extension and Michigan Sea Grant supported local schools in fielding place-based stewardship education projects. In 2021, **28 students and 5 teachers** from Au Gres-Sims School District were engaged in Great Lakes and natural resources stewardship programs.



## IMPACT AT A GLANCE



**\$1,183,491**  
TOTAL ECONOMIC IMPACT



**119**

PROGRAMS HOSTED IN  
ARENAC COUNTY



**109**

YOUTHS ENROLLED IN 4-H



**38**

RESIDENTS SERVED IN  
SNAP-ED PROGRAMMING



**146**

ALUMNI RESIDENTS IN  
ARENAC COUNTY



**17**

STUDENTS ENROLLED AT  
MSU



**\$195,649**

FINANCIAL AID DISBURSED  
(2020-2021)



**\$14,791**

SPENT WITH LOCAL  
BUSINESS



**12**

ASK AN EXPERT CONTACTS



**1,572**

ARENAC COUNTY  
EXTENSION WEBSITE VIEWS

## CONTACT US

### MSU Extension Arenac County

102 S. Grove Street  
Standish, MI 48658

989-846-4111

[msue.arenac@msu.edu](mailto:msue.arenac@msu.edu)

Garden Hotline  
888-678-3464

[msue.msu.edu/arenac](http://msue.msu.edu/arenac)

<https://www.facebook.com/arenac4h>

**Connie Manszewski**, County Support Staff,  
[manszews@msu.edu](mailto:manszews@msu.edu)

**Melissa Prohaska**, 4-H Program Coordinator/  
Community Nutrition Instructor  
[prohask1@msu.edu](mailto:prohask1@msu.edu)

**Meaghan Gass**, Michigan Sea Grant Extension  
Educator, [gassmeag@msu.edu](mailto:gassmeag@msu.edu)

**Julia (Julie) Darnton**, District Director  
810-922-6483, [darntonj@msu.edu](mailto:darntonj@msu.edu)

**Ian Sawyer**, District Support,  
989-275-7178, [sawyeria@msu.edu](mailto:sawyeria@msu.edu)

MSU is an affirmative action, equal-opportunity employer. Michigan State University Extension programs and materials are open to all without regard to race, color, national origin, gender, gender identity, religion, age, height, weight, disability, political beliefs, sexual orientation, marital status, family status or veteran status.